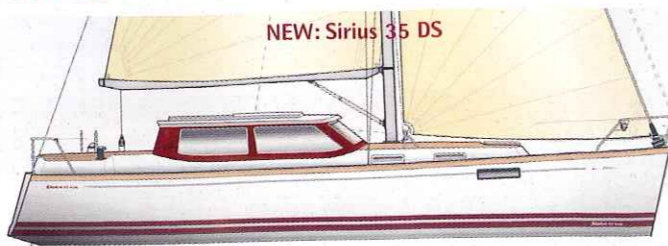


FEEL THE DIFFERENCE...

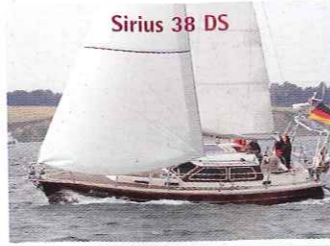
Sirius Deck Saloon Yachts since 1971



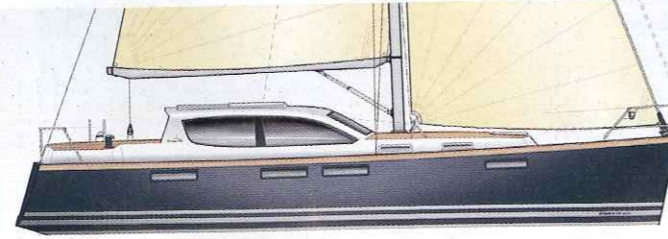
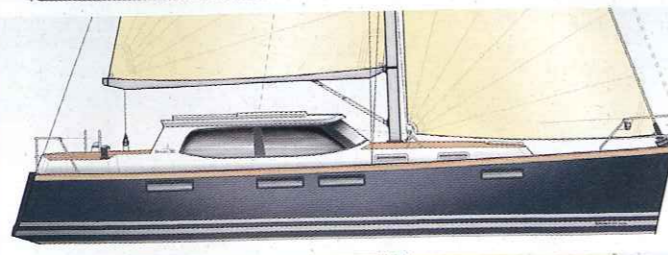
Sirius 32 DS



NEW: Sirius 35 DS



Sirius 38 DS



SIRIUS 32 DS, new 35 DS and 38 DS coming soon 30.5 DS and 43 DS available with twin- and swing keel ...ENJOY THE PANORAMIC VIEW

Genuine deck saloon yachts built individually to your specific requirements. Visit us in Plön - 50 miles north of Hamburg -, at Southampton Boatshow 11.-20. Sept. or at the „boot“ in Düsseldorf 23.-31. Jan. 2010.

Contact: Torsten Schmidt, phone +49 173 653 87 21  
Contact UK: Marilyn Kinnon, phone +44(0) 7970 833 718

[www.sirius-werft.de](http://www.sirius-werft.de)



### NOA Boat accessories

We at NOA in Tyresö, Sweden have manufactured boat accessories for over 20 years. Our aim is to make life at sea safe, secure, simple and comfortable. All our products are easy to fit and dismantle and are designed to ensure that they will not scratch or damage your boat.

### Lagun Cockpit table

It's the ideal solution for mounting a table in the cockpit for boat owners and manufacturers. The frame is a brilliant design which gives the table great freedom of movement and enables it to be removed and packed away in seconds. Perfect to set up after a day of sailing for a few drinks with your mates!

- Mounts for wind generators, solar panels, spinnaker poles etc
- Anchor davits, anchor & chain holders
- Cockpit table frame, table tops, filleting tables
- Boat winter storage systems

**meridianzero**

UK distributor [www.meridianzero.co.uk](http://www.meridianzero.co.uk)  
Please email [office@meridianzero.co.uk](mailto:office@meridianzero.co.uk) for your NOA catalogue

**NOA Lagun**

+46 8 742 63 00 [www.noa.se](http://www.noa.se) [noa@noa.se](mailto:noa@noa.se)

# Active radar reflectors



Sea-Me have had a near-monopoly on the active radar reflector market, but now there's competition from the new Echomax Active-X RTE. David Pugh reports

**B**eing seen at sea is literally a matter of life and death, so it's hardly surprising that so much interest was taken in the questions raised by the Ouzo disaster and the subsequent Qinetiq lab test on radar reflectors. And one of the results of that report was a statement that 'the Sea-Me is the recommended product if power is available'.

The justification is clear: despite reasonable performance from some of the passive reflectors tested, mixed with disconcertingly poor results from others, the Sea-Me was the only product which consistently met or exceeded the requirements set

down by ISO8729. Although not a legal requirement, this international standard for radar reflectors provides a benchmark to indicate how visible a small boat would be at sea when fitted with a reflector.

Sea-Me's success was down to one simple difference with the competition. Where the other reflectors are passive and just reflect part of an incident radar pulse, Sea-Me is active and sends back a stronger return.

Such devices are generically known as Radar Target Enhancers (RTEs). Several RTEs have been developed in the past (check [www.theradarreflectorsite.org](http://www.theradarreflectorsite.org) for a near-exhaustive list) but few seem to have been commercially successful. Sea-Me, who have over

4,500 units on the water today, proved the pattern wrong and benefited from being the only RTE in Qinetiq's test, but now there's a new player. Echomax have a good reputation in the field of passive radar reflectors, so it's not surprising to see them launch a rival to the Sea-Me with their Active-X RTE.

### What is an RTE?

The principle behind an RTE is that it collects an incident radar pulse and sends back a much stronger pulse at the same frequency, resulting in a stronger signal at the receiver. One fallacy that should immediately be laid to rest is that they make a small boat look like a container ship on a radar picture. Confusing a radar in this way is

regarded as jamming, and is likely to fall foul of the law.

Instead, an RTE improves the vessel's radar cross-section (RCS), which is effectively how reflective a target is to radar pulses - not how big it is. As an analogy, imagine two identical objects at sea on a pitch-dark night, one painted white and the other matt black. If you panned across the horizon with a searchlight, you would certainly see the white object, but probably not the black, despite their being the same size and shape.

Yachts tend to be poor reflectors of radar, closer to the black than the white object in the analogy. To improve this, adding a passive radar reflector is like adding a mirror to the black object. Most of it

would remain dark, but when the searchlight passed over there would be a single, dazzling reflection, provided the mirror is at the correct angle.

Adding an RTE takes this one step further. Instead of a mirror, imagine a single, extremely bright lamp fitted to the black object so that it can shine out in all directions. Most of the time it is switched off, but as soon as it detects the searchlight it switches on. Unlike the mirror, it shines just as strongly whatever angle the searchlight comes from. That's the true advantage of an RTE: even if the radar is only weakly received, the RTE will send a strong pulse back to the receiver, increasing the number of times the yacht is reliably 'painted' on the radar screen. And that has all sorts of additional benefits: you are not only more visible to a human radar operator, you are also more likely to be tracked by the ARPA (Automatic Radar Plotting Aid) systems fitted to ships, which need a ratio of around 50% successful paints to reliably track a target.

**Echomax and Sea-Me**

Visually, the Echomax and Sea-Me products are pretty similar: the

Echomax antenna is slightly taller and thinner than the Sea-Me and has a slightly smaller control box. Both operate on the X-band of frequencies (9.32GHz - 9.5GHz) used by small boat radar and also by ships (who operate it in conjunction with the lower frequency S-band) and both offer the option to fit an external alarm which sounds when the unit detects a radar pulse, a useful feature on ocean passages. This is backed up by a visual alarm in each case, and Echomax add an audible alarm in the control box.

However, reading further into the specification sheet reveals some significant differences. Where Sea-Me quote a radar cross section of 42.57m<sup>2</sup> when the antenna is upright, Echomax quote 111.36m<sup>2</sup>. At 20° heel, Sea-Me's RCS is 9.03m<sup>2</sup>, while Echomax claim 20.80m<sup>2</sup>. It should be noted that both products exceed ISO8729-2, which requires a minimum RCS of 7.5m<sup>2</sup> at 10° heel for motorboats and 20° heel for yachts.

On paper then, it looks like the Echomax should outperform the Sea-Me, but theory and reality can differ so we took both units out to test their maximum range and how they perform when heeled.

# PBO's on-water test

At close quarters an RTE often makes little difference, as the radar returns from a small boat are still consistent enough to paint regularly on the screen. Where an RTE starts to be of significant benefit is at longer ranges, where the returns are starting to become erratic.

To test this, we mounted both antennas on 2.3m windsurf masts and lashed them to the A-frame of a RIB. We then headed out for open water to the east of the Isle of Wight, pursued by *Trinity Star*, a Nelson 42 owned by Alan Watson of Trinity Nautical Training and equipped with a Raymarine HD radar with a 48in, 4kW open array scanner. Once at No Man's Land Fort, when the echoes from other vessels became fewer and farther between, we first tested

how easy it was to track the RIB without an RTE by noting down how far away the RIB had reached when the radar's MARPA system lost lock.

With no RTE active, the RIB reached four miles before we lost lock. We then switched on the Sea-Me, which extended this range to 5.5 miles. Carrying out the same test with the Echomax allowed the RIB to continue to a range of 6.7 miles before we lost lock, a significant improvement and very close to our radar horizon of around 6.5 miles.

We then tested the units for performance at different angles of heel by deliberately tilting each mast in increments of 10° at a range of four miles. One of the advantages of Raymarine's HD radar is it allows you to assess the strength of an echo on the

screen by its colour: red for strong, yellow for medium and green for a weak return. The Sea-Me continued to return a strong echo at 10° heel, with a medium return at 20°. The signal was detectable but weak at 30°, and by 40° we had lost contact, although at 40° you have more to worry about than radar visibility!

The Echomax lived up to its specification sheet, returning strong echoes at angles up to 20°. At 30° it showed a medium return, while at 40° the signal was weak. However, we reached 60° heel before we lost lock altogether.

**Test results**

**MAXIMUM MEASURED RANGE**

Echomax	Sea-Me
6.7NM	5.5NM

**HEEL PERFORMANCE AT 4NM**

	Echomax	Sea-Me
0°	Strong	Strong
10°	Strong	Strong
20°	Strong	Medium
30°	Medium	Weak

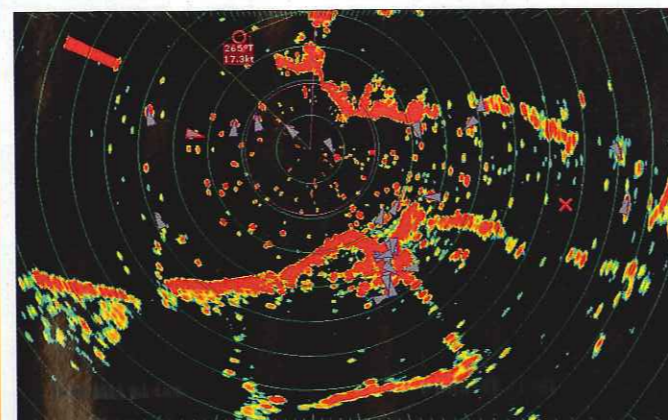


Alan Watson's Nelson 42 and 48in, 4kW Raymarine HD radar provided the ideal platform for our test

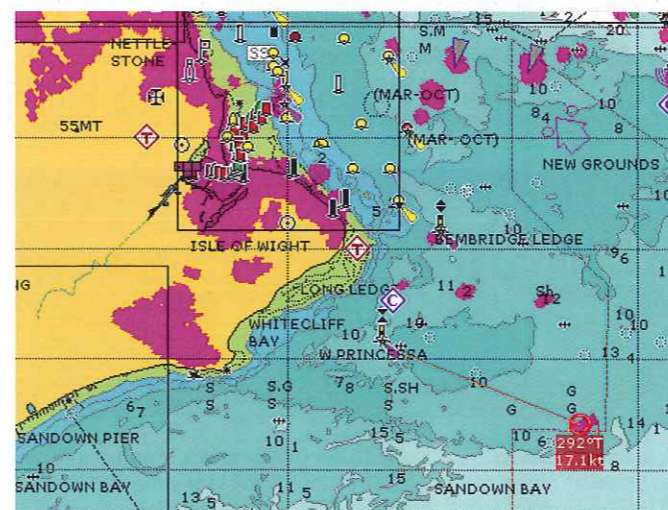
**Echomax and Sea-Me specifications**

	Echomax Active-X	Sea-Me
RCS at 0° (m <sup>2</sup> )	111.36	42.57
RCS at 10° (m <sup>2</sup> )	78.96	24.87
RCS at 20° (m <sup>2</sup> )	20.80	9.03
EIRP (transmit power)	1W typical	630mW max
Standby current (mA)	15	72.7
Transmit current (mA)*	290	199
Antenna size (mm)	478 x 40.5	416 x 50
Price	£539.35	£513.83
Website	www.echomax.co.uk	www.sea-me.co.uk

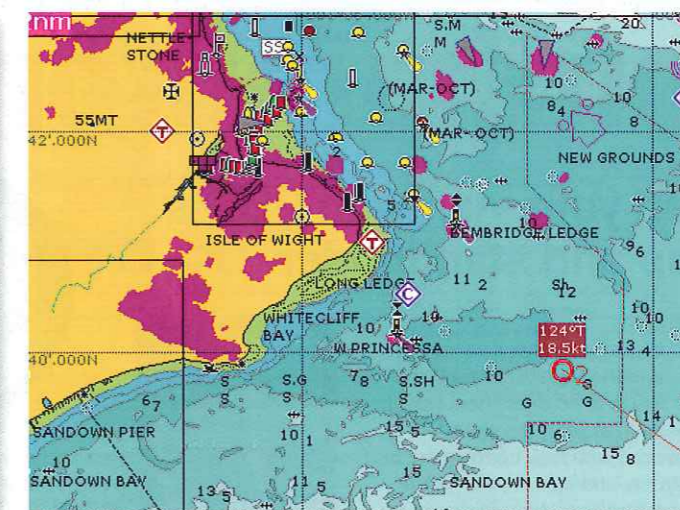
\* this is the current drawn when the RTE is continuously transmitting. Where there are fewer radars, the current will be significantly lower - Echomax quote 23mA for five radars in the area and 32mA for 10 radars.



The Raymarine HD radar shows echos as red, yellow or green according to their strength



The Echomax at around 5.5NM range. Note the strong echo beneath the MARPA ring



At a slightly reduced range, the Sea-Me's response was variable, finally losing MARPA lock at 5.5NM

## Calculating Radar Cross Section (RCS)

To calculate the RCS of a vessel, you model it as a sphere that would have the same radar signature as the vessel. A good yacht radar reflector might have a stated RCS of 2m<sup>2</sup>, which is equivalent to a sphere of 1.6m diameter. The Sea-Me's stated RCS at 0° heel is 42.57m<sup>2</sup>, equivalent to a 7.4m diameter sphere, while the equivalent sphere for the Echomax's 111.36m<sup>2</sup> RCS measures 11.9m.

The choice of a sphere is due to its even response - with no sharp corners it consistently reflects radar pulses of any frequency in a predictable pattern at any angle.

For detection by radar, the crucial factor is how the surfaces of the object to be detected are positioned with respect to the incoming pulses, which is why a passive radar reflector aims to present as many flat surfaces at as many angles as possible. A

slab-sided container ship will have a huge RCS when side-on to the radar, but a stealth vessel of the same size with surfaces angled to reflect incident radar pulses away from the receiver will either not appear at all or have a tiny radar signature that could be from a much smaller vessel. Imagine a cone pointing directly towards the radar scanner - it could be physically enormous, but because all the surfaces are angled to reflect pulses away from the receiver it would have no radar signature at all.

Using the sphere model in the cases of the container ship and

the stealth ship, the sphere used to model the RCS of the container ship would be large, bigger than the ship itself, as the slab sides of the ship form a near-perfect reflector. For the stealth vessel, the sphere would be much smaller and hence have greater curvature, resulting in a smaller area at an appropriate angle to reflect the radar signal to the receiver. In either case, the useful reflective area of the sphere cannot exceed the size of the vessel. It's impossible to make an object look larger than it really is - all you can do is make it a better or worse reflector.

**PBO'S VERDICT**

The Qinetiq test made clear the advantage of active units over passive radar reflectors, and our experiments show that both the RTEs significantly increase your chances of being seen at sea. One of the major benefits of these units is the consistent return they give owing to their omnidirectional antennas, unlike the directional nature of passive reflectors.

Stronger returns are of benefit at longer ranges, within the limits of the radar horizon, and our tests showed the Active-X gave improved performance over the Sea-Me at extended range and increased heel, which combined with the specifications suggest that Echomax have moved the RTE market forward.

However, past tests carried out with commercial vessels have

shown that an X-band RTE is not a complete solution to being seen at sea. Ships must by law be fitted with both X-band and S-band radar, but many ships prefer to monitor S-band radar as it is more tolerant to sea clutter and precipitation. Neither of these products have any response at S-band. For now, even if you fit an RTE, you should also fit a passive

reflector, which although optimised for X-band will have some response to S-band radar.

But this story has by no means finished. Sea-Me plan to launch a dual-band unit later this year, which will work on both the X- and S-bands, and I can't imagine that Echomax will be far behind with a similar item. Meanwhile, Class B AIS transponders have a growing following.

WITH THANKS TO: Alan Watson of Trinity Nautical Training for his expert advice and use of his boat and radar, Peter Crump of PC Marine for his time, advice and the use of his RIB and Alex Bell for his advice and active participation in the test